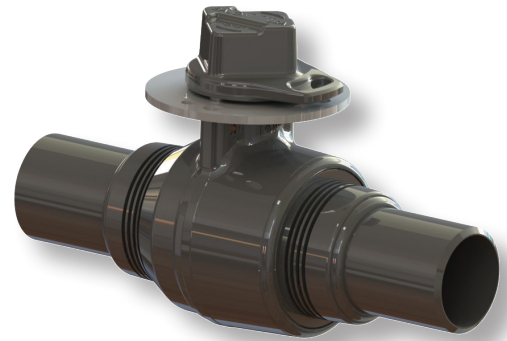


# Weld X Weld Connection

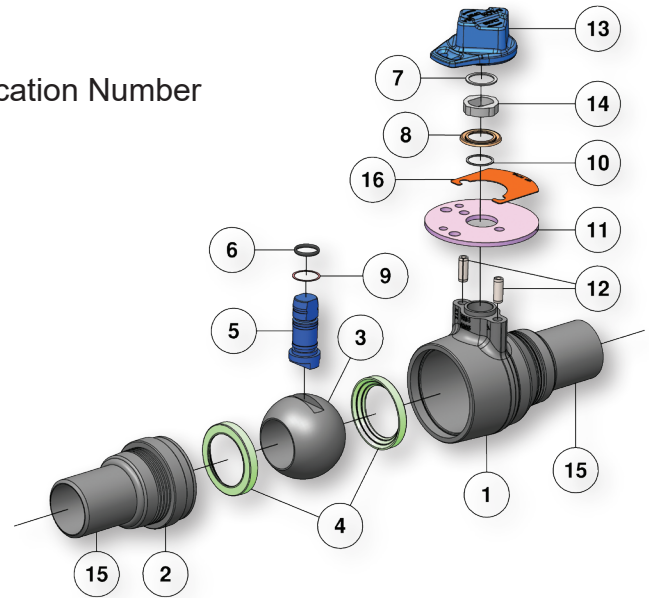
## Series US Weld X Weld Carbon Steel

- Weld End Ball Valve
- ANSI Class 150 (285 PSI WP)
- ANSI Class 300 (740 PSI WP)
- 3/4" Through 6"
- Multi-Seal Seats
- True Full Port for Hot Tap Service
- Heat Dissipating Fins for Protection of Seats and Seals During Welding
- Rugged Double Stops
- Heavy Duty Forged Steel Construction
- Solid Balls for Reduction of Turbulence and Pressure Drop
- Stainless Steel Stem Standard
- Maintenance Free
- Meets/Exceeds-ASME B16.34
- 100% Made in USA
- Each Valve Marked With A Unique Identification Number



### Material Description

ITEM	PART NAME	MATERIAL (STANDARD)
1	Body	ASTM A105, Normalized
2	Adapter	ASTM A105, Normalized
3	Ball	Carbon Steel - Nickel Chrome Plated
4	Seats	Nylon
5	Stem	316 Stainless Steel
6	Stem O-Ring	Buna-N
7	Snap Ring	Carbon Steel
8	Weather Seal	Nylon
9	Stem Seal	TFE
10	Snap Ring	Carbon Steel
11	Lock Plate	Carbon Steel
12	Stop Pin	Stainless Steel
13	Drive Nut - 2" Square	Ductile Iron/Carbon Steel
14	Stem Connector	Carbon Steel
15	Pipe	ASTM A106 Grade C
16	Tag	Stainless Steel



\* Note: Valve is seal welded and is not field repairable.

### Dimensional Data

SIZE	CATALOG	PORT/A	WP	B	C	D	E	F	LBS.	Cv
.75x.75x.75	3/4F-US13-BW	.75	285	9	3.1	1.82	.47	4.5	3.1	-
.75x.75x.75	3/4F-US33-BW	.75	740	9	3.1	1.82	.47	4.5	3.1	-
1x.75x1	1R-US13-BW	.75	285	9	3.1	1.82	.47	4.5	3.4	30
1x.75x1	1R-US33-BW	.75	740	9	3.1	1.82	.47	4.5	3.4	30
2x1.5x2	2R-US13-BW	1.5	285	11.8	4.5	3.48	2	4.5	13.3	148
2x1.5x2	2R-US33-BW	1.5	740	11.8	4.5	3.48	2	4.5	13.3	148
2x2x2	2F-US13-BW	2	285	11.8	4.90	4.28	2	4.5	17.4	-
2x2x2	2F-US33-BW	2	740	11.8	4.90	4.28	2	4.5	17.4	-
3x3x3	3F-US13-BW	3	285	11.8	5.90	6.05	2	4.5	36.3	-
3x3x3	3F-US33-BW	3	740	11.8	5.90	6.05	2	4.5	36.3	-
4x3x4	4R-US13-BW	3	285	12.8	5.90	6.05	2	4.5	39.5	662
4x3x4	4R-US33-BW	3	740	12.8	5.90	6.05	2	4.5	39.5	662
4x4x4	4F-US13-BW	4	285	12.8	6.60	7.50	2	4.5	55.4	-
4x4x4	4F-US33-BW	4	740	12.8	6.60	7.50	2	4.5	55.4	-
6x6x6	6F-US13-BW*	6	285	18	12.4	10.47	2	5.25	99	-
6x6x6	6F-US33-BW*	6	740	18	12.4	10.47	2	5.25	99	-

\*Also available with Gear Operator.

**BALON**

09.2019.Rev.1

